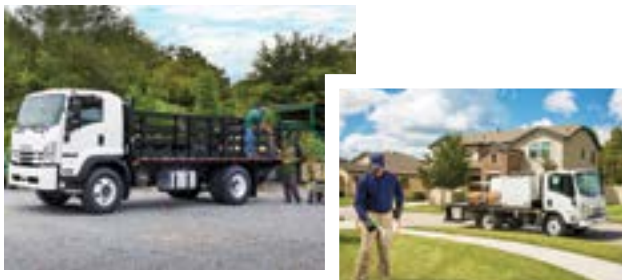


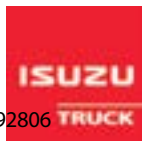
Isuzu Commercial Truck of America



Isuzu Commercial Truck of America Inc. has a history focused on low cab forward medium duty trucks with the engines and cabs for vocational bodies best suited for your business.

- Commercial truck Classes 3 – 6 with class-leading fuel economy
- Two diesel engine options and a gas engine that is CNG/LPG capable
- GVWR ratings 12,000 - 25,950 pounds
- Outstanding driver visibility, excellent maneuverability and a tight turning radius
- Multiple wheelbases that accommodate body choices 10 – 30 feet in length
- 3-seat cabs or 7-person crew cabs
- Vehicle Health Reports that provide performance data
- 33 years of legendary dependability

For more information, call (866) 441-9638 or visit www.isuzucv.com.



1400 S. Douglas Road, Suite 100, Anaheim, CA 92806

☎ 886-441-9638

🌐 www.IsuzuTruck.com

📘 [Facebook.com/isuzutruck/](https://www.facebook.com/isuzutruck/)

🐦 [Twitter.com/Isuzu_Trucks](https://twitter.com/Isuzu_Trucks)

🌐 [Linkedin.com/company/52329/](https://www.linkedin.com/company/52329/)

📷 [Instagram.com/Isuzu_Trucks](https://www.instagram.com/Isuzu_Trucks)

GIE+EXPO booth #5194

John Deere



ZTrack™ Z945M

The ZTrak™ Z945M is the latest addition to the John Deere commercial zero-turn radius mower lineup. The new model offers an Electronic Fuel Injection (EFI) engine with higher horsepower for increased fuel efficiency and power in varied mowing conditions.

Boasting a 27 HP EFI engine, the Z945M is available in two deck offerings — 60-inch side discharge or 60-inch Mulch On Demand™ (MOD). The increased horsepower makes quicker work of common activities, such as material collection, mulching and mowing in thick turf conditions, and the EFI engine improves overall fuel economy.

In addition to increased power and improved fuel economy, John Deere also enhanced ride comfort and ease of use on the Z945M. To help operators stay more comfortable on long mowing days, the new mower offers a premium suspension seat. The newly designed seat offers a thicker bottom cushion, additional padding on the back with ergonomic contouring, and adjustable armrests to improve ride comfort and the overall mowing experience.

For added convenience, users will also notice an enlarged and angled fuel filler neck to complete fueling with less mess.

For more information, visit www.johndeere.com.

2000 John Deere Run, Cary, NC 27513

☎ 800-537-8233

🌐 www.JohnDeere.com

📘 [Facebook.com/JohnDeereUSA](https://www.facebook.com/JohnDeereUSA)

🐦 [Twitter.com/JohnDeere](https://twitter.com/JohnDeere)

📷 [Instagram.com/JohnDeere](https://www.instagram.com/JohnDeere)

GIE+EXPO booth #1110

